

TOM FORD CLEAR SHINY DARK RUTHENIUM EYEGLASSES

Tom Ford Eyeglasses. Series number: FT5450. Color code: 012. Lens Width: 51 mm. Lens Bridge: 19 mm. Arm Length: 140 mm. Frame Material: Metal. Frame Color: Shiny Dark Ruthenium. Lenses Type: Clear demo lenses. UPC/EAN code: 664689859337. Tom Ford Clear Shiny Dark Ruthenium Eyeglasses FT5450 012 51

SKU: FT5450 012 51

SWAROVSKI STARDUST NYLON TUBE BLUE DOUBLE BRACELET

A shimmery and trendy Swarovski double bracelet that can also be worn as a choker, crafted in a capri blue nylon fishnet tube, filled with capri blue-colored crystals. It also features a magnetic palladium-plated clasp. Size: Small (38 cm / 14.96 inches)

SKU: 5186426



OLIVER PEOPLES BROWN WASH ROUND MENS SUNGLASSES



Oliver Peoples Sunglasses. Series OP-505. Color code: 1647. Size: 47. Shape: Round. Lens Width: 47 mm. Lens Height: 43.2 mm. Lens Bridge: 24 mm. Arm Length: 142 mm. 100% UV protection. Non-Polarized. Frame Material: Acetate. Frame Color: Military Vsb / 18k Gold Plated. Lenses Type: Brown Wash. UPC/EAN code: 827934416154. Oliver Peoples OP-505 Brown Wash Round Men's Sunglasses OV5184 1647 47.

SKU: OVP5184-1647-47



PERSOL GREEN AVIATOR SUNGLASSES



Persol Sunglasses. Color code: 518/4E. Size: 52. Shape: Round. Lens Width: 52 mm. Lens Bridge: 20 mm. Arm Length: 145 mm. 100% UV protection. Non-Polarized. Frame Material: Metal. Frame Color: Silver. Lenses Type: Green. UPC/EAN code: 8053672830132. Persol Green Sunglasses PO2446S 518/4E 52.

SKU: PSO2446S-5184E-52



OLIVER PEOPLES DELRAY SUN GREEN C ROUND UNISEX SUNGLASSES



Oliver Peoples Sunglasses. Series Delray Sun. Color code: 140752. Size: 48. Shape: Round. Lens Width: 48 mm. Lens Height: 43.9 mm. Lens Bridge: 20 mm. Arm Length: 145 mm. 100% UV protection. Non-Polarized. Frame Material: Acetate. Frame Color: Vintage Dtb. Lenses Type: Green C. UPC/EAN code: 827934381629. Oliver Peoples Delray Sun Green C Round Unisex Sunglasses OV5314SU 140752 48.

SKU: OVP5314SU-140752-48



SWAROVSKI IF VERSO RUTHENIUM PLATED CHAIN WITH 3 INTERCHANGEABLE CRYSTAL PENDANTS NECKLACE

Swarovski 5092842 Women's Verso Changeable Crystal Pendant Necklace is 23-3/4" inches long, is crafted from rhodium-plated metal, and features clear, blue and green interchangeable crystal pendants with the Swarovski Swan charm. the necklace has lobster clasp. The pendants measure 1-1/4 inches long and 1 inch across.

SKU: 5092842



SWAROVSKI STARDUST NYLON FISHNET TUBE MIDNIGHT BLUE CRYSTAL NECKLACE

Swarovski's bestselling Stardust collection now includes necklaces! This easy-to-wear design features a nylon fishnet tube filled with tiny blue crystals, creating a 3D silhouette. The lobster clasp closure in palladium-plated metal is adjustable

SKU: 5127503





SWAROVSKI STARDUST VIOLET NYLON TUBE MEDIUM DOUBLE BRACELET

The Swarovski Stardust Violet Nylon Tube Double Bracelet / Choker for Women Model # 5120044 is a statement jewellery that is made of nylon fishnet tube. The lavender fishnet tube is filled with hundreds of mauve Swarovski crystals that create a 3D silhouette effect. This stunning piece of jewellery is long enough to be used as a choker or a double bracelet. The bracelet features a stainless steel palladium plated magnetic closure to provide a secure fit. This wrap bracelet is a Size Medium and measures 40cm. A halter dress with a leather clutch and heel shoes are the perfect outfit options to go along with this beautiful piece of jewellery. Like all of our jewellery, this Swarovski Stardust Purple Nylon Tube Double Wrap Bracelet for Women is brand new, and comes in its original packaging!

SKU: 5120044

SWAROVSKI STARDUST ROSE PINK NYLON TUBE DOUBLE WEAP BRACELET

A summery and vibrant Swarovski double bracelet that can also be worn as a choker, crafted in a pink nylon fishnet tube, filled with pink-colored crystals. It also features a magnetic palladium-plated clasp. Size: Small (38 cm / 14.96 inches)

SKU: 5139747



SWAROVSKI STARDUST RUBY RED NYLON TUBE SMALL DOUBLE BRACELET

A statement piece that will attractively accentuate any outfit of yours, this fabulous bracelet boasts red fishnet tube filled with eye-catching red crystals. The bracelet is designed by Swarovski for the delightful "Stardust" collection. Size Small.

SKU: 5139748





SWAROVSKI AGILITY PAVE FACETED BANGLE CHAIN BRACELET

The Swarovski Agility Rhodium Plated Stainless Steel Bangle Chain Bracelet for Women Model # 5037963 is a brilliantly-crafted statement jewellery that can add spark to any outfit. It features an emerald green faceted cushion Swarovski crystal embedded in the silver-tone bezel. The jewellery is half silver-tone bangle with round Swarovski crystal embellishments and half silver-tone chain which has a charm dangling from it. The dangler is the Swarovski Swan logo pendant with crystal embellishments. The bangle chain bracelet features a lobster clasp to give a secure fit. You can adjust the size of this medium bracelet according to your comfort by adjusting the clasp. Like all of our jewellery, this Swarovski Agility Rhodium Plated Stainless Steel Bangle Chain Bracelet for Women is brand new, and comes in its original packaging!

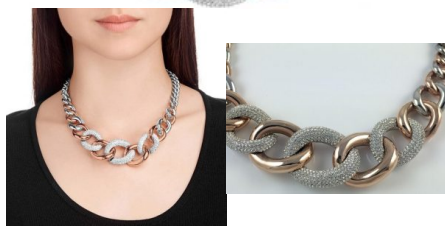
SKU: 5037963



SWAROVSKI BOUND NECKLACE

A Swarovski necklace styled in a two-tone (rose gold and palladium with stainless steel) chain, featuring chunky links embellished with clear crystal pave. Approximate size: 15 5/8 inches

SKU: 5089276





SWAROVSKI BOLT STAINLESS STEEL HINGE BANGLE FOR WOMEN SIZE MEDIUM

Size Medium Stainless Steel and Crystal Bangle
Industrial Spirit with its Screw and Bolt Design

SKU: 5081365

